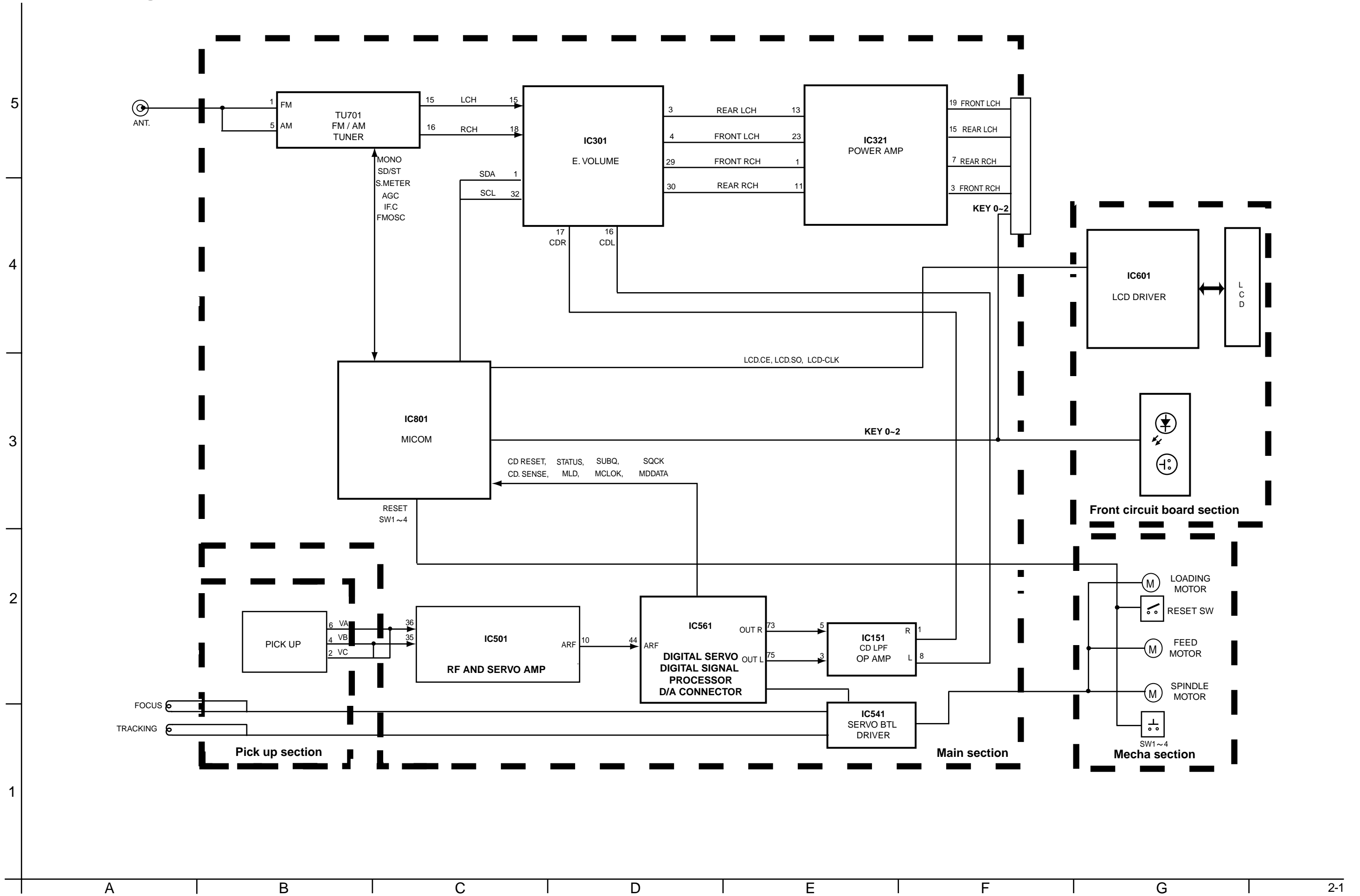
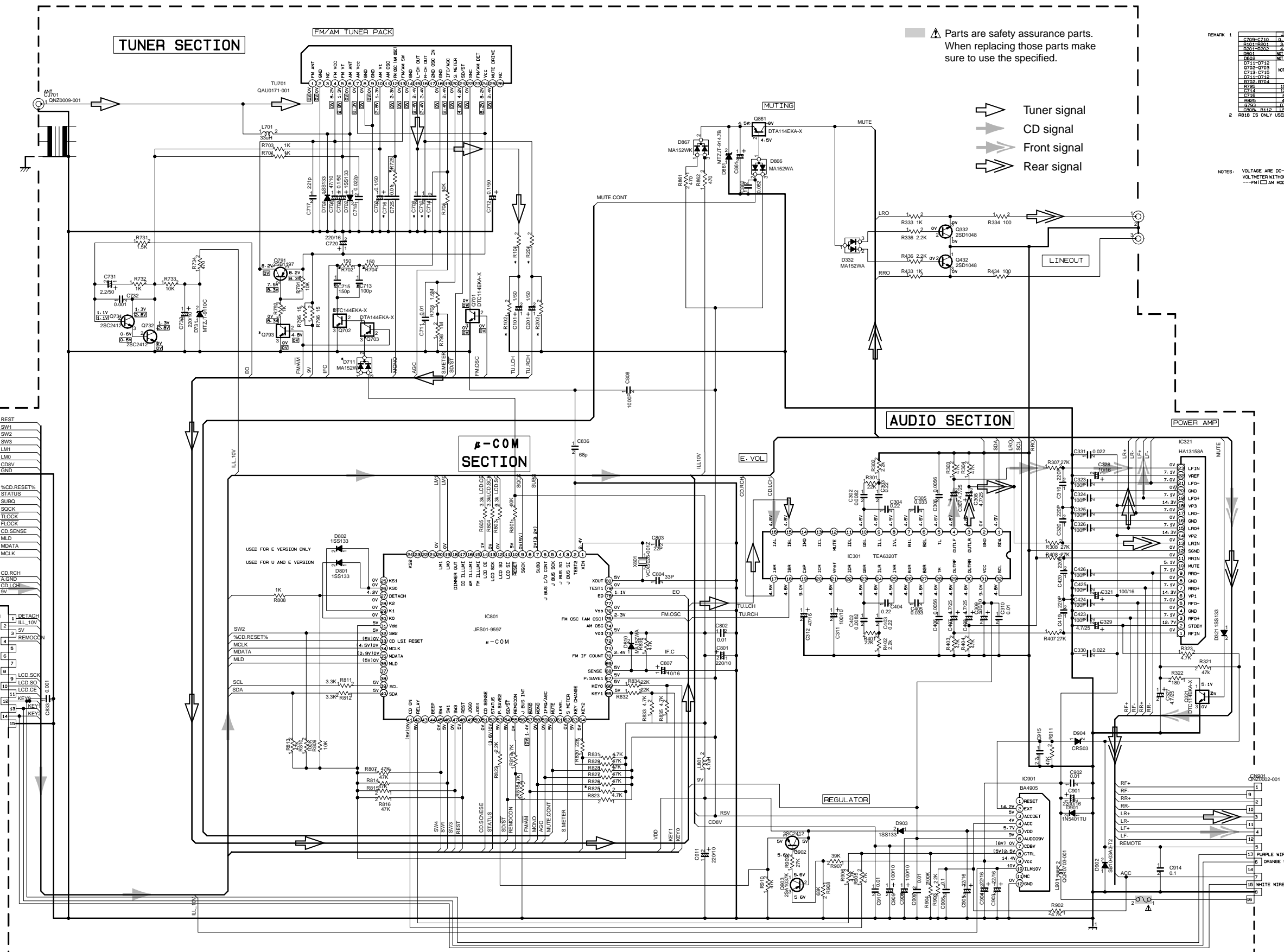


# Block diagram



# Standard schematic diagrams

## ■ Main amp. section



Parts are safety assurance parts. When replacing those parts make sure to use the specified.

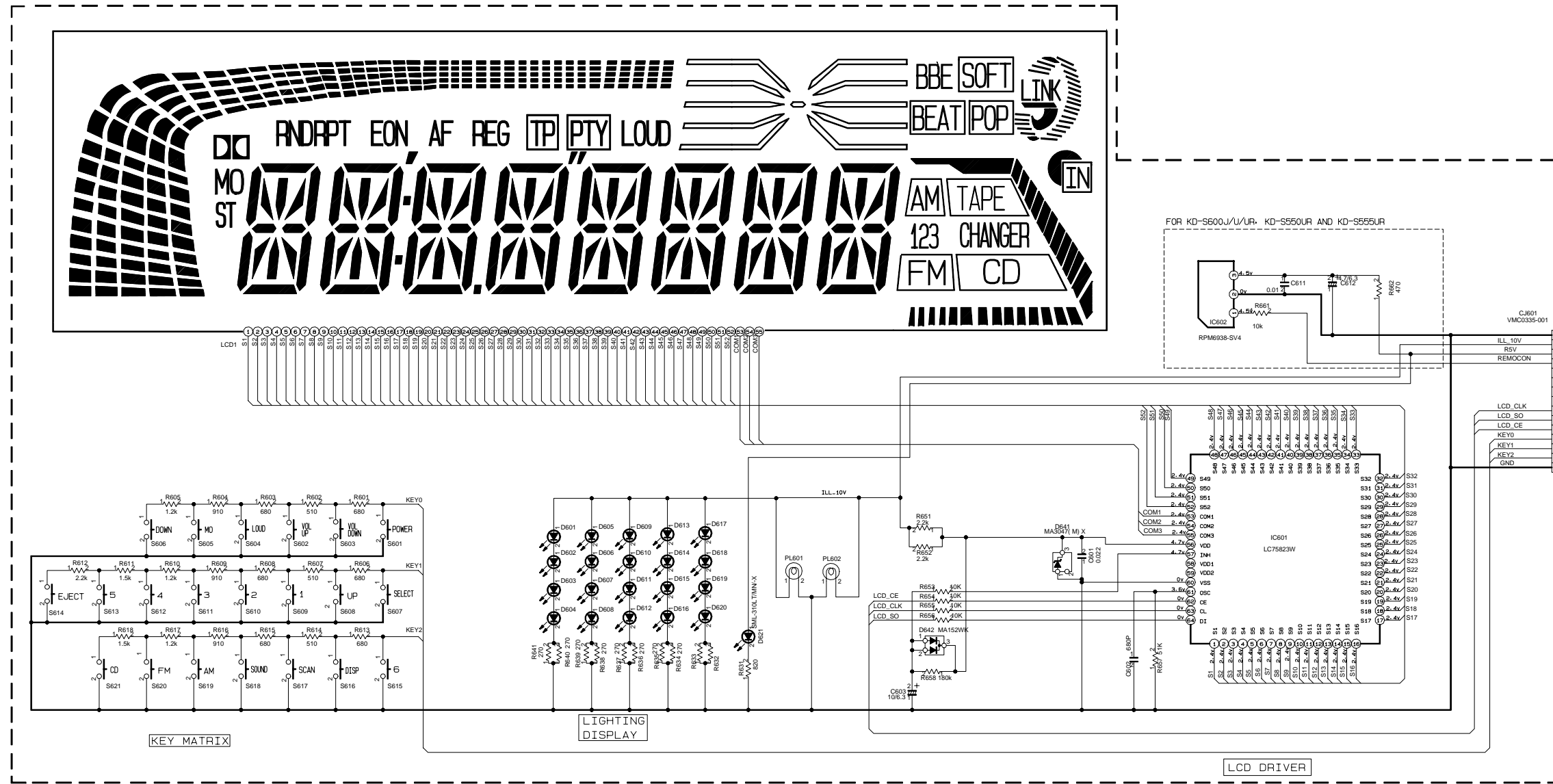
- ▶ Tuner signal
- ▶ CD signal
- ▶ Front signal
- ▶ Rear signal

REMARK 1

Part No.	QTY	U	E
R708-C710	0.002	0.002	0.002
R401-R501	3.00	3.00	3.00
R501-R502	4.00	4.00	4.00
R503	NOT USED	NOT USED	NOT USED
D711-D712	NOT USED	NOT USED	NOT USED
D713-D715	NOT USED	NOT USED	NOT USED
D716-D717	NOT USED	NOT USED	NOT USED
R718-R724	0	0	0
R725-R726	1.00	1.00	1.00
R727	2.00	2.00	2.00
R728	3.00	3.00	3.00
R729	4.00	4.00	4.00
R730-R731	1.00	1.00	1.00
R732-R733	1.00	1.00	1.00
R734	1.00	1.00	1.00
R735	1.00	1.00	1.00
R736	1.00	1.00	1.00
R737	1.00	1.00	1.00
R738	1.00	1.00	1.00
R739	1.00	1.00	1.00
R740	1.00	1.00	1.00
R741	1.00	1.00	1.00
R742	1.00	1.00	1.00
R743	1.00	1.00	1.00
R744	1.00	1.00	1.00
R745	1.00	1.00	1.00
R746	1.00	1.00	1.00
R747	1.00	1.00	1.00
R748	1.00	1.00	1.00
R749	1.00	1.00	1.00
R750	1.00	1.00	1.00
R751	1.00	1.00	1.00
R752	1.00	1.00	1.00
R753	1.00	1.00	1.00
R754	1.00	1.00	1.00
R755	1.00	1.00	1.00
R756	1.00	1.00	1.00
R757	1.00	1.00	1.00
R758	1.00	1.00	1.00
R759	1.00	1.00	1.00
R760	1.00	1.00	1.00
R761	1.00	1.00	1.00
R762	1.00	1.00	1.00
R763	1.00	1.00	1.00
R764	1.00	1.00	1.00
R765	1.00	1.00	1.00
R766	1.00	1.00	1.00
R767	1.00	1.00	1.00
R768	1.00	1.00	1.00
R769	1.00	1.00	1.00
R770	1.00	1.00	1.00
R771	1.00	1.00	1.00
R772	1.00	1.00	1.00
R773	1.00	1.00	1.00
R774	1.00	1.00	1.00
R775	1.00	1.00	1.00
R776	1.00	1.00	1.00
R777	1.00	1.00	1.00
R778	1.00	1.00	1.00
R779	1.00	1.00	1.00
R780	1.00	1.00	1.00
R781	1.00	1.00	1.00
R782	1.00	1.00	1.00
R783	1.00	1.00	1.00
R784	1.00	1.00	1.00
R785	1.00	1.00	1.00
R786	1.00	1.00	1.00
R787	1.00	1.00	1.00
R788	1.00	1.00	1.00
R789	1.00	1.00	1.00
R790	1.00	1.00	1.00
R791	1.00	1.00	1.00
R792	1.00	1.00	1.00
R793	1.00	1.00	1.00
R794	1.00	1.00	1.00
R795	1.00	1.00	1.00
R796	1.00	1.00	1.00
R797	1.00	1.00	1.00
R798	1.00	1.00	1.00
R799	1.00	1.00	1.00
R800	1.00	1.00	1.00
R801	1.00	1.00	1.00
R802	1.00	1.00	1.00
R803	1.00	1.00	1.00
R804	1.00	1.00	1.00
R805	1.00	1.00	1.00
R806	1.00	1.00	1.00
R807	1.00	1.00	1.00
R808	1.00	1.00	1.00
R809	1.00	1.00	1.00
R810	1.00	1.00	1.00
R811	1.00	1.00	1.00
R812	1.00	1.00	1.00
R813	1.00	1.00	1.00
R814	1.00	1.00	1.00
R815	1.00	1.00	1.00
R816	1.00	1.00	1.00
R817	1.00	1.00	1.00
R818	1.00	1.00	1.00
R819	1.00	1.00	1.00
R820	1.00	1.00	1.00
R821	1.00	1.00	1.00
R822	1.00	1.00	1.00
R823	1.00	1.00	1.00
R824	1.00	1.00	1.00
R825	1.00	1.00	1.00
R826	1.00	1.00	1.00
R827	1.00	1.00	1.00
R828	1.00	1.00	1.00
R829	1.00	1.00	1.00
R830	1.00	1.00	1.00
R831	1.00	1.00	1.00
R832	1.00	1.00	1.00
R833	1.00	1.00	1.00
R834	1.00	1.00	1.00
R835	1.00	1.00	1.00
R836	1.00	1.00	1.00
R837	1.00	1.00	1.00
R838	1.00	1.00	1.00
R839	1.00	1.00	1.00
R840	1.00	1.00	1.00
R841	1.00	1.00	1.00
R842	1.00	1.00	1.00
R843	1.00	1.00	1.00
R844	1.00	1.00	1.00
R845	1.00	1.00	1.00
R846	1.00	1.00	1.00
R847	1.00	1.00	1.00
R848	1.00	1.00	1.00
R849	1.00	1.00	1.00
R850	1.00	1.00	1.00
R851	1.00	1.00	1.00
R852	1.00	1.00	1.00
R853	1.00	1.00	1.00
R854	1.00	1.00	1.00
R855	1.00	1.00	1.00
R856	1.00	1.00	1.00
R857	1.00	1.00	1.00
R858	1.00	1.00	1.00
R859	1.00	1.00	1.00
R860	1.00	1.00	1.00
R861	1.00	1.00	1.00
R862	1.00	1.00	1.00
R863	1.00	1.00	1.00
R864	1.00	1.00	1.00
R865	1.00	1.00	1.00
R866	1.00	1.00	1.00
R867	1.00	1.00	1.00
R868	1.00	1.00	1.00
R869	1.00	1.00	1.00
R870	1.00	1.00	1.00
R871	1.00	1.00	1.00
R872	1.00	1.00	1.00
R873	1.00	1.00	1.00
R874	1.00	1.00	1.00
R875	1.00	1.00	1.00
R876	1.00	1.00	



■ LCD & key control section



FRONT CIRCUIT BOARD SECTION

	KD-S600	KD-S550	KD-S550A KD-S550UR/KD-S600UR
PL601	GLL0033-003	GLL0033-003 FOR U/U	GLL0033-003
PL602		GLL0033-001 FOR U/U	
D617	SML-310VT/JK/-X	LNJ308618/1-3/X	SML-310VT/JK/-X
D618			
R630	NRS402J-391X	NRS402J-271X	NRS402J-391X
R633			
LCD	GLD0103-001	GLD0126-001	GLD0126-001
D601- D616		LNJ308618/1-3/X	LNJ308618/1-3/X
R601- R621		NSW0124-001X	NSW0124-001X

NOTE VOLTAGE ARE DC-MEASURED WITH DIGITAL  
VOLTMETER WITHOUT INPUT SIGNAL CONDITION

# Printed circuit boards

## ■ Main board

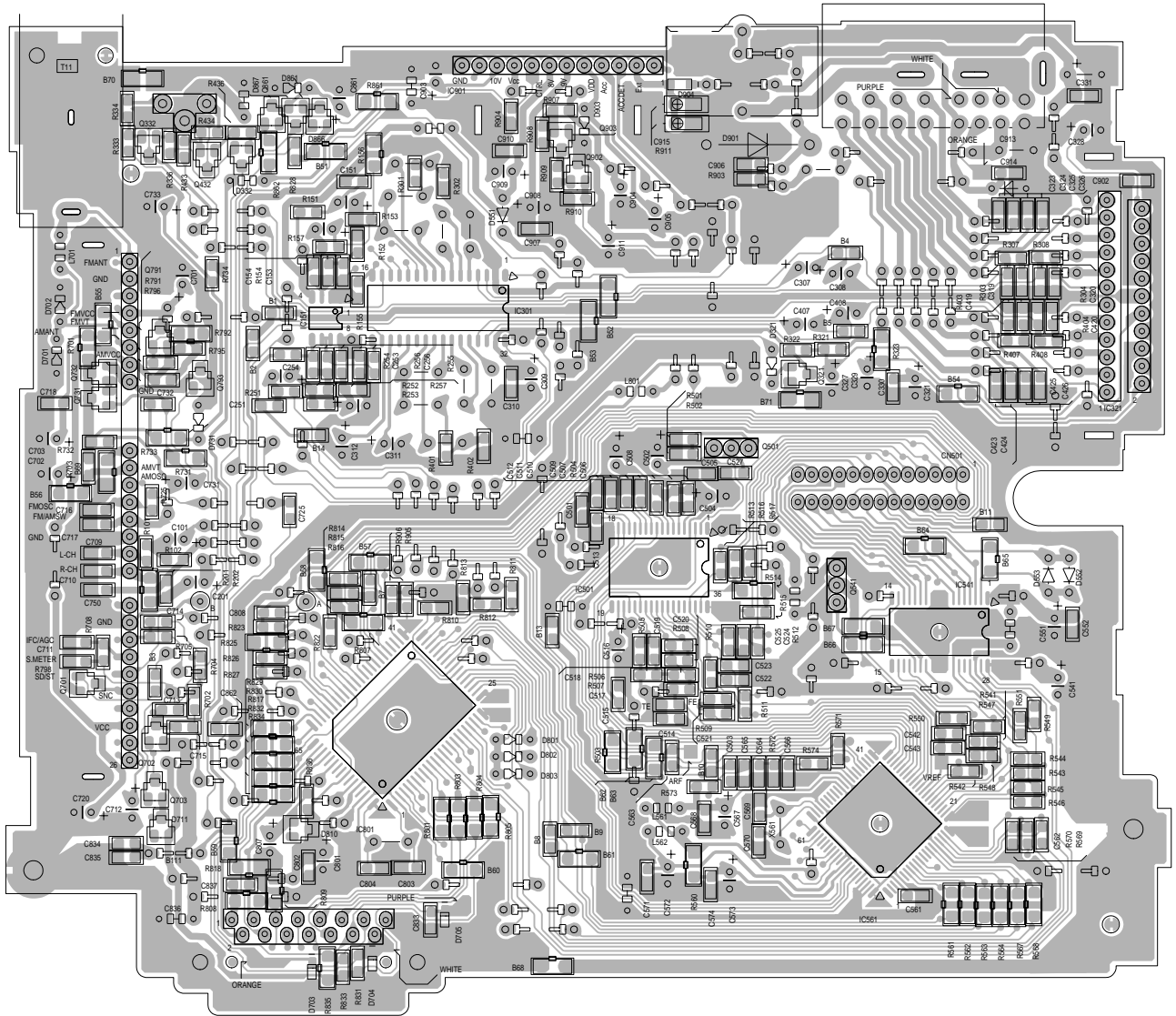
5

4

3

2

1



A

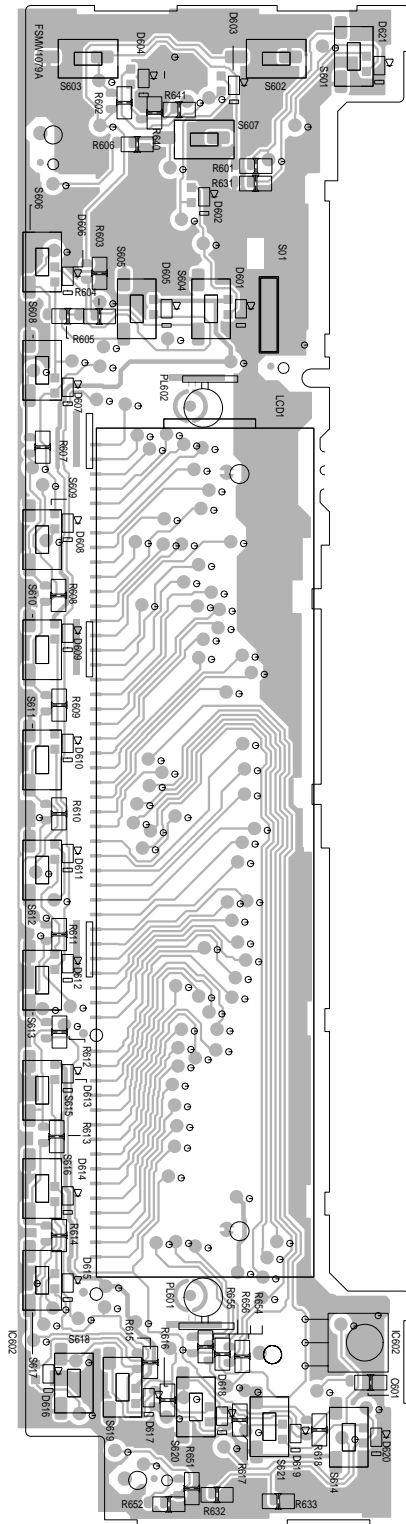
B

C

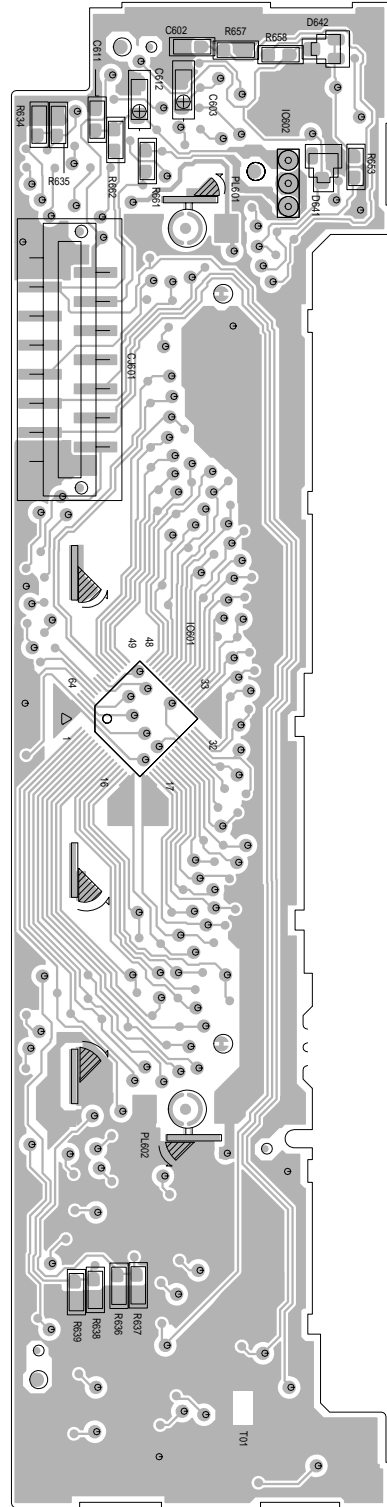
2-5

■ LCD & key control board

(Forward side)



(Reverse side)



5

4

3

2

1

2-6

A

B

C

D